

Product Information

Human Renal Glomerular Endothelial Cells (HRGEC)

Catalog Number	10HU-082	Cell Number	0.5 million cells/vial
Species	<i>Homo sapiens</i>	Storage Temperature	Liquid Nitrogen

Description

iXCells Biotechnologies provides high quality Human Small Intestine Microvascular Endothelial Cells (HSIMEC), which are isolated from normal human small intestine tissue and cryopreserved at P2, with >0.5 million cells in each vial. HSIMEC express vWF/Factor VIII, CD31 (PECAM), and Dil-Ac-LDL by uptake. They are negative for HIV-1, HBV, HCV, mycoplasma, bacteria, yeast, and fungi and can further expand for 12 population doublings in Endothelial Cell Growth Medium (Cat# MD-0010) under the condition suggested by iXCells Biotechnologies.

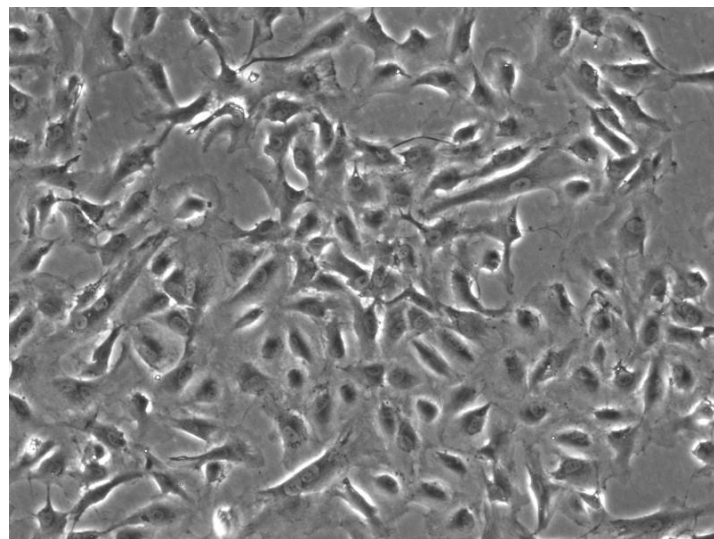


Figure 1. Human Small Intestine Microvascular Endothelial Cells (HSIMEC) (phase contrast).

Product Details

Tissue	Human small intestine tissue
Package Size	0.5 million cells/vial
Passage Number	P2
Shipped	Cryopreserved
Storage	Liquid nitrogen
Growth Properties	Adherent
Media	Endothelial Cell Growth Medium (Cat# MD-0010)

Protocols

Thawing of Frozen Cells

1. Upon receipt of the frozen HSIMEC, it is recommended to thaw the cells and initiate the culture immediately in order to retain the highest cell viability.
2. To thaw the cells, put the vial in 37°C water bath with gentle agitation for ~1 minute. Keep the cap out of water to minimize the risk of contamination.
3. Pipette the cells into a 15ml conical tube with 5ml fresh Endothelial Cell Growth Medium (Cat# MD-0010).
4. Centrifuge at 1,000rpm (~220g) for 5 minutes under room temperature.
5. Remove the supernatant and resuspend the cells in fresh Endothelial Cell Growth Medium.
6. Culture the cell in T75 flask.

Safety Precaution: *it is highly recommended that protective gloves and clothing should be used when handling frozen vials.*

Standard Culture Procedure

1. HSIMEC can be cultured in Endothelial Cell Growth Medium (Cat# MD-0010).
2. When cells reach ~80-90% confluence, remove the medium, and wash once with sterile PBS (5ml/T75 flask).
3. Add ~2.5ml of 0.25% Trypsin-EDTA to the flask and incubate for ~3 minutes at 37°C. Neutralize the enzyme by adding 2-3 volumes of cell culture medium.
4. Centrifuge 1,000rpm (~220g) for 5min and resuspend the cells in desired volume of medium.
5. Seed the cells in the new culture vessels at 5×10^3 cells/cm².

Disclaimers

This product is intended for laboratory research purposes only. It is not intended for use in humans. While iXCells Biotechnologies uses reasonable efforts to include accurate and up-to-date information on this product sheet, we make no warranties or representations as to its accuracy. Citations from scientific literature and patents are provided for informational purposes only. iXCells Biotechnologies does not warrant that such information has been confirmed to be accurate.

This product is sent with the condition that you are responsible for its safe storage, handling, and use. iXCells Biotechnologies is not liable for any damages or injuries arising from receipt and/or use of this product. While reasonable effort is made to insure authenticity and reliability of strains on deposit, iXCells Biotechnologies is not liable for damages arising from the misidentification or misrepresentation of cultures.

© iXCells Biotechnologies 2015. All rights reserved.