

iXCells Protocol

OSTEOGENIC DIFFERENTIATION PROTOCOL

Osteogenic Differentiation Protocol was designed to achieve maximum osteoblasts differentiation from adipose-derived stem cells (ADSCs) *in vitro*. This protocol can be used for human or rodent ADSCs.

Osteogenic differentiation from adipose-derived stem cells (ADSCs) (12 well plate)

1. Grow ADSCs in Adipose-Derived Stem Cell Growth Medium (Cat# MD-0003) to ~80% confluency.
2. Carefully aspirate the growth medium, apply 1.5 ml Osteogenic Differentiation Medium per well (Cat# MD-0006) to the cells.
3. Change fresh Osteogenic Differentiation Medium every 3 days. Be careful not to disturb the cell monolayer.
4. Culture the human ADSCs for 3-4 weeks, and osteoblasts can be detected by Alizarin Red S staining (stain the extracellular calcium deposit) (Figure 1 and 2). Extracellular calcium deposit can be observed in 2-3 weeks post osteogenic induction when using mouse ADSCs.

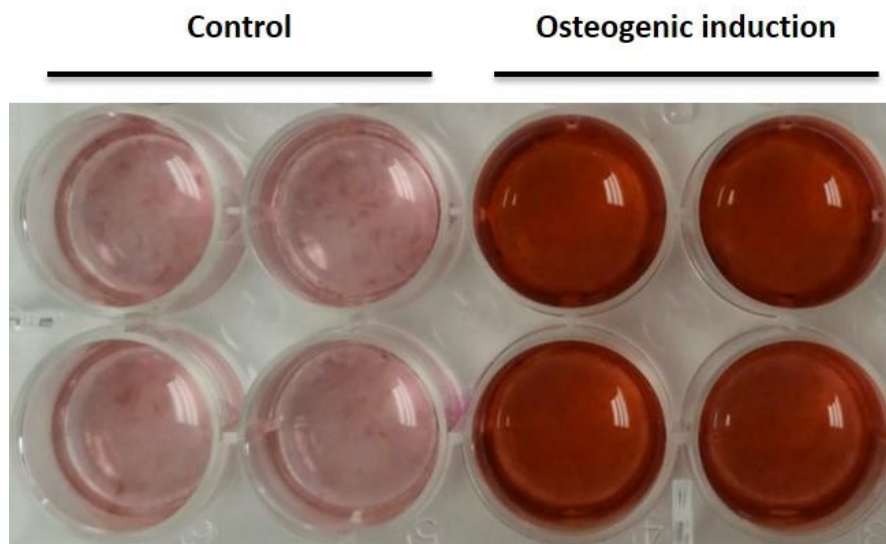


Figure 1. Human ADSC osteogenic induction (Day 24). Alizarin Red S staining of osteoblasts. The extracellular calcium deposit was stained in bright orange-red color.

Alizarin Red S staining of osteoblasts (12 well plate)

1. **Alizarin Red S Solution preparation:** Dissolve 2 g Alizarin Red S (Sigma, Cat# A5533) in 100 ml of ddH₂O and adjust pH to 4.1-4.3 with HCl or NH₄OH. Filter the solution through 0.22 μ membrane and store at 4°C in dark.
2. Remove the Osteogenic Differentiation Medium. Wash cells once with 1.5 ml 1 x DPBS (w/o Ca⁺⁺/Mg⁺⁺).
3. Apply 1 ml 10% formalin to the cells and incubate for 1 hour at room temperature.
4. Remove formalin with a pipette. Wash cells with 1.5 ml of ddH₂O twice.
5. Add 1 ml of fresh made Alizarin Red S Solution and incubate at room temperature in the dark for >45 minutes.

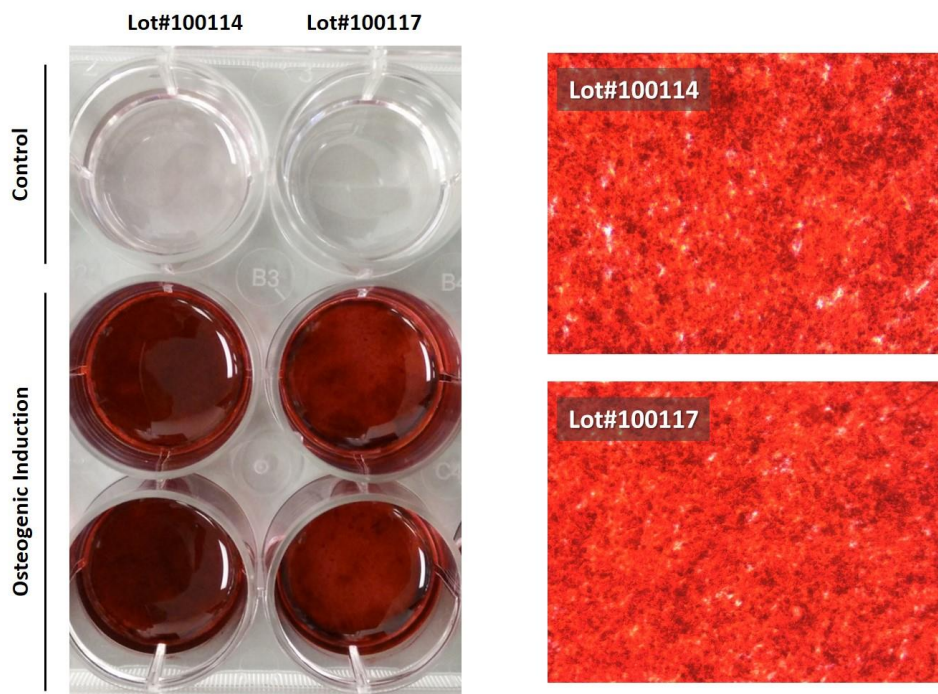


Figure 2. Mouse ADSCs (from white fat) can be differentiated into osteoblasts using the osteogenic induction protocol (Alizarin Red S staining, Day 21).

6. Remove Alizarin Red S solution and immediately wash the cells 2~4 times with 1.5 ml ddH₂O. Carefully aspirate the wash buffer and apply 1 ml DPBS/well.
7. Analyze the cells. Undifferentiated ADSCs (without extracellular calcium deposits) are slightly reddish, while ADSC-derived osteoblasts (with extracellular deposits) are bright orange-red color (Figure 1 and 2).

Related Primary Cells:

Primary Cells	Vendor	Catalog #
Human Adipose Derived Stem Cells (hADSC, Normal)	iXCells Biotechnologies	10HU-001
Mouse Adipose-Derived Stem Cells-white fat (MADSC-wf)	iXCells Biotechnologies	10HU-006
Mouse Adipose-Derived Stem Cells-brown fat (MADSC-bf)	iXCells Biotechnologies	10MU-005
Rat Adipose Derived Stem Cells (rADSCs, from white fat)	iXCells Biotechnologies	10RA-001
Rat Adipose Derived Stem Cells (rADSCs, from brown fat)	iXCells Biotechnologies	10RA-002

Reagents/Media needed:

Reagent / Medium	Vendor	Catalog #
Adipose-Derived Stem Cell Growth Medium	iXCells Biotechnologies	MD-0003
Osteogenic Differentiation Medium	iXCells Biotechnologies	MD-0006
Alizarin Red S	Sigma	A5533

Disclaimers

This product is intended for laboratory research purposes only. It is not intended for use in humans. While iXCells Biotechnologies uses reasonable efforts to include accurate and up-to-date information on this product sheet, we make no warranties or representations as to its accuracy. Citations from scientific literature and patents are provided for informational purposes only. iXCells Biotechnologies does not warrant that such information has been confirmed to be accurate.

This product is sent with the condition that you are responsible for its safe storage, handling, and use. iXCells Biotechnologies is not liable for any damages or injuries arising from receipt and/or use of this product. While reasonable effort is made to insure authenticity and reliability of strains on deposit, iXCells Biotechnologies is not liable for damages arising from the misidentification or misrepresentation of cultures.
© iXCells Biotechnologies 2015. All rights reserved.